

Software RIP combining usability and high performance

RASTER LINK 6

*Bundled Item

High performance software is sometimes difficult to use, we make it easy!
The new RasterLink6 is focused on being simple and friendly.
With its many new functions, the "Software RIP for Everybody" has been achieved and provides for more professional and advanced finished products through its universal accessibility.

Intuitive and user-friendly operation



1 Basic setting items are indicated by icons, enabling intended operations to be performed intuitively without hesitation.



2 When clicking on the targeted icon, the screen will be changed in the same window. In addition, layout settings can be re-used at any time by implementing "Register as Favorite".



3 When printing, you can visually confirm the job progress on the main screen.

Function 1

3-layer print of color, white and color can be performed at the same time.

Function 2

Equipped with imprinting function which supports variable data

Function 3

Operating status such as predicted printing time can be noticed by e-mail

Supports Web update function.

Supports the Web update function that has been well-received in RasterLinkPro5. Program update and profile download can be easily performed via internet.

Specifications

Item	JFX500-2131	
Head	On-demand Piezo head (6 printheads with 3 staggered configuration)	
Print resolution	300 dpi, 600 dpi, 900 dpi, 1,200 dpi	
Ink	Type	UV curable ink : LUS-150 (C, M, Y, K, W)
		UV curable ink : LH-100 (C, M, Y, K, W)
	Supply system	Supplied by 2L Ink Station
	Ink circulation (*1)	White ink circulation by MCT (Mimaki Circulation Technology)
Ink degassing module	Equipped with MDM (Mimaki Degassing Module)	
Inkjet primer	Automatically applied by PR-100	
Maximum print size (W X D)	2,100 X 3,100 mm (82.7 X 122.0")	
Media	Size (W X D)	2,100 X 3,100 mm (82.7 X 122.0")
	Height	Max. 50 mm (2.0")
	Weight	Less than 50 kg (110.2 lbs.) / m ²
Media table		Air suction by vacuum
	Vacuum area	Vertically divided into 4 zones
Print accuracy	Absolute accuracy	± 0.3 mm (0.01") or ± 0.3% from specified print distance
	Repeatability	± 0.2 mm (0.01") or ± 0.1% from specified print distance
UV unit		Equipped with UV LED (Light Emitting Diodes)
	Lifetime (*2)	About 5,000 hours
Interface	USB2.0	
Applicable standard	VCCI class A, CE Marking, CB Report, UL, RoHS Directive	
Power specifications	AC 200 - 240 V, 50/60 Hz	
Power consumption	Less than 2.4 kVA	
Operational environment	Temperature	15 - 30 °C (59 - 86 °F)
	Humidity	35 - 65 %Rh
	Temperature accuracy	18 - 25 °C (64.4 - 77 °F)
	Temperature gradient	Less than ± 10 °C/h (18 °F)
	Dust	Equivalent to normal office level
Dimensions (W X D X H) (*3)	4,100 X 4,462 X 1,490 mm (161.4 X 175.7 X 58.7")	
Weight (*3)	1,353 kg (2,982.8 lbs.)	

*1 MCT works only with white ink.
*2 Reference value. There is no guarantee as to the lifetime.
*3 Ink Station is not included in the dimensions and the weight.
*4 RasterLink6 and the standard vacuum unit are bundled with the JFX500-2131.

● All trademarks or registered trademarks are the property of their respective owners. ● Specifications are subject to change without notice. ● Some of the screens and printing samples in this catalog are artificial renderings. ● Inkjet printers print using extremely fine dots, thus colors may vary slightly following replacement of the printing heads. Also note that if using multiple printer units, colors may vary slightly among the units due to slight individual differences among the units.

● Some of the samples in this catalogue are artificial renderings. ● Specifications, design and dimensions stated in this catalogue may be subject to change without notice (for technical improvements, etc.). ● The corporate names and merchandise names written on this catalogue are the trademark or registered trademark of the respective corporations. ● Inkjet printers print using extremely fine dots, so colors may vary slightly after replacement of the printing heads. Also note that if using multiple printer units, colors could vary slightly from one unit to other unit due to slight individual differences.

Supplies

Item	Color	Item No.	Remarks
LUS-150	Cyan	LUS15-C-BA	
	Magenta	LUS15-M-BA	
	Yellow	LUS15-Y-BA	
	Black	LUS15-K-BA	
	White	LUS15-W-BA	
LH-100	Cyan	LH100-C-BA	1 liter ink bottle
	Magenta	LH100-M-BA	
	Yellow	LH100-Y-BA	
	Black	LH100-K-BA	
	White	LH100-W-BA	
	Clear	LH100-CL-BA	
Inkjet primer PR-100		TBD	
Tungsten replacement needle for ionizer		SPA-0208	4 pcs
Air filter kit		SPA-0209	10 pcs
Ink bottle 2L BK		SPA-0210	1 pc (empty bottle)

• Every UV ink is sold by the liter. Please put it into the Ink Station.
• As ink flexibility of LUS-150 vary according to the substrate, please verify your substrate in advance.
• JFX500-2130 may not take full advantage of its print speed with LH-100.

Option

Item	Item No.	Remarks
Vacuum unit (3 φ . 200)	OPT-J0216	3-phase : 200 . 240 V, 30 A, 3.4 kW
Vacuum unit (1 φ . 200)	OPT-J0217	1-phase : 200 . 240 V, 30 A, 1.9 kW
Vacuum unit (3 φ . 400)	OPT-J0232	3-phase : 380 . 480 V, 20 A, 3.4 kW
Ionizer kit	OPT-J0322	For electrostatic removal
Option blower connection KIT	OPT-J0330	

• Additional power source is required in order to use the vacuum unit.
• Each vacuum unit requires "Option blower connection KIT (OPT-J0330)" in order to connect to the JFX500-2131.

Inks and substrates:

• Please note that properties and adhesion, weather resistance etc. of ink and substrates can vary. Therefore please test materials before printing.
• Some substrates require primer before printing. Please test materials beforehand or ask your sales representative.

Safety notice:

You are dealing with UV light sources that may harm your health. Please follow below guidelines strictly:

• Do not look directly into the UV light source nor place your hand, or expose your skin directly to the UV light source.
• Depending upon print mode, there might occur some VOC emission from printed parts not yet cured and hardened
• In addition, please read the instructions and guidelines of the manual carefully and follow those.



Our factory is certified according to ISO14001:2004

Large Format UV LED Flatbed Inkjet Printer JFX500-2131

Mimaki
Product Brochure

Powerful combination of
Speed and Quality

MAX
60m²/h

White Ink
Printing
45m²/h

MIMAKI ENGINEERING CO., LTD.

2182-3 Shigeno-otsu, Tomi-city, Nagano 389-0512, Japan
Tel: +81-268-78-2288
trading@mimaki.jp www.mimaki.co.jp

MIMAKI USA, INC.

150 Satellite Boulevard, suite A, Suwanee, Georgia 30024, U.S.A.
Atlanta +1-888-530-3988 Boston +1-888-530-3986
Los Angeles +1-888-530-3987 Chicago +1-888-530-3985
www.mimakiusa.com

MIMAKI EUROPE B.V.

Stammerdijk 7E, 1112 AA Diemen, The Netherlands
Tel: +31-20-4627-640
info@mimakieurope.com
www.mimakieurope.com @MimakiEurope

DB20273-04

Mimaki
Green Technology



JFX500-2131



White Ink Printing
45m²/h

Max Speed 60m²/h

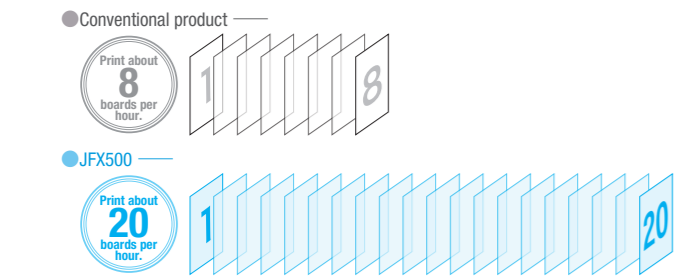
For amazing speed, the JFX500-2131 is equipped with Mimaki's latest print head and UV LED technology. Mimaki's exclusive head control technology delivers an amazing high print quality. This combination of "Speed" and "High quality" are essential for large format printers. Both of them indeed come true in the newly released JFX500-2131!

High Speed Print

MAX60m²/h White Ink Printing 45m²/h

Newly developed print head design

Equipped with the new developed print head (6 print heads with 3 staggered configuration), the "JFX500-2131" achieves print speed up to 60 m²/h with CMYK, while at the same time keeping 45 m²/h for white ink printing applications.



* Print conditions: 4 color printing/Draft mode Board size: 1,220mm x2,440mm (4 x 8)

Newly developed high-speed UV ink: LUS-150

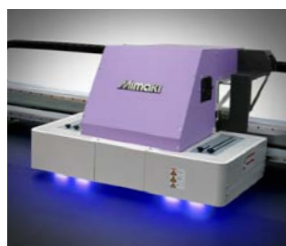
LUS-150 offers improved curing times resulting in a less tactile sticky feeling. This ink is flexible up to 150% resulting in increased elasticity and bending performance on wide variety of media and substrates without cracking and fracturing. Mimaki also offers a more rigid type ink formulation for printing on more stiff and hard surfaces requiring greater adhesion properties on these types of substrates.

Type	4-color High Speed Ink LUS-150	4-color Vivid Ink LUS-100
Color	C M Y K + W	C M Y K + W + G
Features	Newly developed UV ink offers a 150% flexibility while providing a lower operational costs during high-speed UV printing.	Hard UV ink with higher scratch and chemical resistance as well as color reproduction.
Flexibility	Good	None

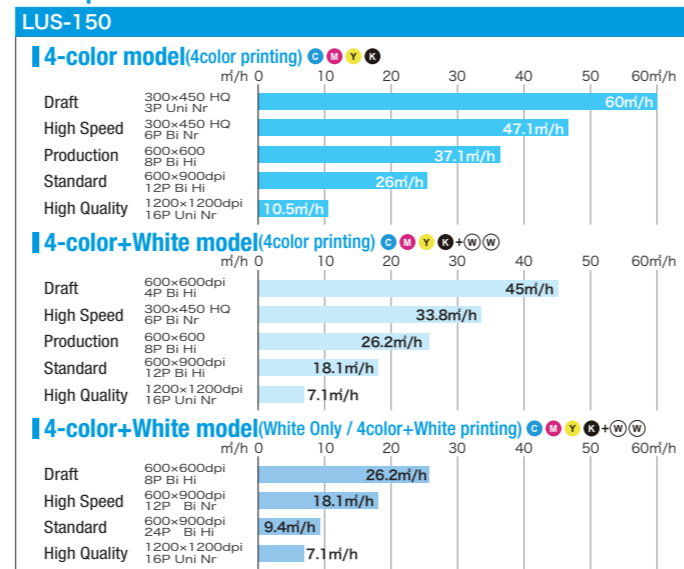
* LUS = LED UV Stretchable ink
* Ink flexibility of LUS-150 may vary according to the substrate, please verify your substrate in advance.

Newly developed UV LED unit

The New UV LED unit is optimized and the curing efficiency of LED is improved enough to cure the ink. High speed UV printing is available with all the advantages of LED technology, such as long-life, energy savings, and lower heat generation (being able to print on a media which is easily deformed or discolored by heat).



Print Speed

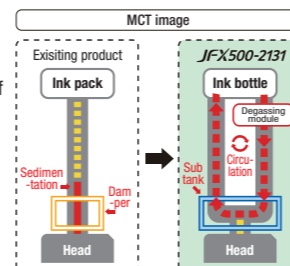


Easy Maintenance

Ink circulation, ecology & economy with the application of white ink

MCT to regularly circulate white ink is standard equipment. It enables stable output from the time of machine startup by effectively avoiding the settling of white pigment in the ink lines. Additionally, MCT contributes to reduction of ink waste, thereby supporting environmentally and economically friendly applications.

* MCT works only with white ink.
(MCT = Mimaki Circulation Technology)



High Quality Print

IMS for highly detailed and accurate prints

2 units of Mimaki's unique highly-accurate linear scales controlled by IMS have been equipped, for fine step accuracy and dot placement. This results in far less banding artifacts and even the possibility to print legible 2 pt characters.

* Characters may be illegible depending on the media.
(IMS = Intelligent Microstepping System)



MAPSII - A mask pattern that reduces UV curing banding

In addition to the normal pattern, you can select "MAPSII" that effectively reduces bandings. MAPSII implements printing with generating passes, using a gradational mask pattern, the UV curing is performed more gradually and it diminishes the appearance of bandings.

(MAPSII = Mimaki Advanced Pass System)



Smooth and beautiful gradation achieved by Mimaki's unique head control technique

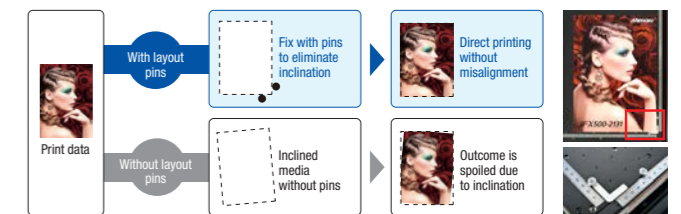
Variable drops function provides 3 different drop sizes at once. The minimum size is amazingly 4 pico-liter drop and produces smooth and natural gradation, without granular appearance even in the 4-color mode.



Easy Operations

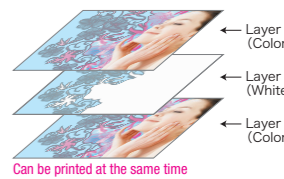
Layout pins that eliminate annoying aligning works

When placing a substrate on a flatbed, strict alignment had been required to check whether the media is not in-line with the printing surface, or whether the point of origin is aligned, etc. This machine is equipped with pins and a scale to eliminate such annoying aligning work. You fix the substrate to the pins and check the placement with the scale at first and then edit the design data or printer settings accordingly. In this way, you can implement direct UV printing without misalignment.



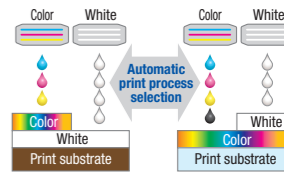
3-layer Print Function

3-layer print of color, white and color can be performed at the same time. The underlay printing of a base layer of white ink reproduces the natural beauty of process colors printed on transparent substrates with high precision and no multi-pass color registration shift.



Reverse Print Function

Select the order of over- and under-print with white in RasterLink6, the bundled standard software RIP. The most efficient path is then determined by the software. Operators experience efficient high productivity gains without further operator intervention.



Offering vacuum unit as standard equipment

JFX500-2131 comes equipped with a vacuum unit to securely fix the substrates on the flatbed. It is also useful for preventing warpage of substrates during printing. The vacuum area is vertically divided into 4 zones and can be separately activated according to the substrates.



Nozzle Recovery Function

Without the nozzle recovery function, when printing and nozzle clogging or failure occurs that could not be resolved by the nozzle cleaning function, printers have to wait stop until the Mimaki service team arrives. When it comes to this function, even if nozzle washing has no effect on a troubled nozzle, the print image quality can be retained immediately without slowing down the print process.

* The recoverability of this function is limited.
* When MAPSII is activated, the nozzle recovery function is disabled.



Eco-Friendliness

Highly refined environmentally friendly functions

UV curing printing is an ecological printing method that hardly generates VOCs. Curing efficiency of the newly developed UV LED unit has been improved compared to that of the conventional one. It is powerful and reduces power consumption while offering much longer life cycles and increased operability. Each UV ink is supplied in high-capacity bottle. This economical and ecological package contributes to reduce amount of industrial waste and running cost.

