

JV150 features-at-a-glance

- Print resolutions up to 1440 dpi
- Print speeds up to 605 sqft/hr
- Up to 8-color ink configuration including orange and light colors
- Eco-solvent inks for indoor or outdoor prints
- Dye-sub inks for textile and apparel applications
- Available in 54 and 64 inch widths

INK VERSATILITY

Eco-solvent ink set includes expanded color choices.

The SS21 eco-solvent ink set now includes Light Magenta, Light Cyan and Light Black for deeper dimensional monochromatic and grayscale imaging. The addition of Orange ink widens the color gamut for better accuracy in the color reproduction of food and solid PANTONE® colors.



Conventional ink set

Ink set plus Light Black

Configure for eco-solvent or dye-sublimation printing.

JV150 Series printers can be configured for either eco-solvent printing for most sign and graphics applications **or** for dye-sublimation printing for textile and apparel transfer sublimation applications.



SS21 Eco-solvent ink set: 8 colors



Sb53 Sublimation ink set: 6 colors

AUTOMATED QUALITY ASSURANCE

Real-time reliability.

JV150 Series printers are equipped with Mimaki's Nozzle Check Unit (NCU) that automatically detects and cleans clogged nozzles while the machine is printing. The Nozzle Recovery System (NRS) takes over if, for any reason, the nozzle fails to clear and the printer experiences nozzle drop out. The NRS registers and substitutes for any nozzle that experiences a drop out. So rather than stopping, the printing can continue without loss of quality.

Optional Bulk Ink System for reduced operational costs.

JV150 Series printers can be equipped with the space-saving MBIS3 (Mimaki Bulk Ink System 3) featuring economical, high-capacity 2L ink packs that enable longer, unattended production and reduced cost per print.



RasterLink6

Intuitive and user-friendly operation



Easy-to-follow icons enable intuitive, user-friendly operations and easy monitoring of printing progress.

SOPHISTICATED RIP SOFTWARE MAXIMIZES PERFORMANCE

User-friendly operation.

RasterLink6 software was designed to be extremely operator-friendly with a wide variety of newly added features for reproducing the highest definition prints.

Simplify RIP operations.

The "Register as Favorite" feature saves regularly used RIP layouts and operations in a single window for quick retrieval.

Web software update function.

Program updates and profiles can be downloaded via the Mimaki website.

JV150 SERIES SPECIFICATIONS | INKS

Item	Specifications	
Print Head	On-demand piezo head	
Print Speed (360x360, 1pass, BI HI)	4-color x2: 605 sqft/hr; 8-color (CMYK, Lm, Lc, Lk, Or): 302 sqft/hr	
Print Resolution	360, 540, 720, 1440 dpi	
Ink	Type	Eco-solvent: SS21 (C, M, Y, K, Lc, Lm, Lk, Or)
	Ink Supply System	Water-based sublimation: Sb53 (Bl, M, Y, K, Lbl, Lm) SS21: 440ml cartridge Sb53: 440ml cartridge
Maximum Print Width	JV150-130: 53.5 in. (1,361mm) JV150-160: 63.3 in. (1,610mm)	
Media	Maximum Width	JV150-130: 53.9 in. (1,371mm) JV150-160: 63.7 in. (1,620mm)
	Maximum Thickness	1.0 mm or less
Certifications	Roll Weight	88 lb. (40 kg) or less
		VCCI class A, FCC class A, ETL UL 60950 CE Marking (EMC, Low voltage, and Machinery directive) CB, RoHS REACH and EnergyStar, RCM
Interface	USB2.0	
Input Power Supply	Single-phase (AC 100-120V / AC 220-240V) x2	
Power Consumption	1440W x 2 or less (100V)	
Operational Environment	Temperature	59°F - 86°F
	Humidity	35% - 65% Rh (non-condensing)
Dimensions (WxDxH)		JV150-130: 98" x 28" x 57"
		JV150-160: 108" x 28" x 57"
Weight		JV150-130: 353 lb. JV150-160: 408 lb.

Item	Color	440ml Cartridge	2L Bulk Pack with Optional MBIS3
SS21 Eco-solvent	Cyan	SPC-0501C	SPC-0588C
	Magenta	SPC-0501M	SPC-0588M
	Yellow	SPC-0501Y	SPC-0588Y
	Black	SPC-0501K	SPC-0588K
	Light Cyan	SPC-0501LC	SPC-0588LC
	Light Magenta	SPC-0501LM	SPC-0588LM
	Light Black	SPC-0501LK	SPC-0588LK
	Orange	SPC-0501Or	SPC-0588Or
Sb53 Water-based Sublimation	Blue	Sb53-BL-44	Sb53-BL-2L
	Magenta	Sb53-M-44	Sb53-M-2L
	Yellow	Sb53-Y-44	Sb53-Y-2L
	Black	Sb53-K-44	Sb53-K-2L
	Light Blue	Sb53-LBL-44	Sb53-LBL-2L
	Light Magenta	Sb53-LM-44	Sb53-LM-2L

Ink Configurations

SS21 Eco-solvent	M C Y K K Y C M
	M C Y K Lc Lm Lk Or
Sb53 Water-Based Sublimation	M Bl Y K K Y Bl M
	M Bl Y K Lbl Lm Bl M

Some of the samples in this brochure are artificial renderings. Specifications, design and dimensions stated may be subject to change without notice (for technical improvements, etc.) The corporate names and merchandise names written in this brochure are the trademarks or registered trademarks of their respective companies. Inkjet printers print using extremely fine dots, so colors may vary slightly after replacement of the printing heads. Also note that if using multiple printer units, colors could vary slightly from one unit to another due to slight individual differences.

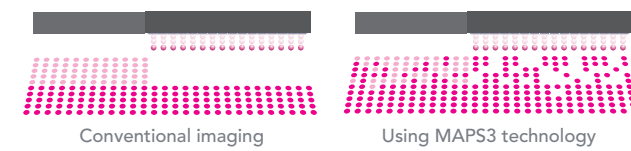
JV150 SERIES PRINTERS



HIGH QUALITY AT HIGHER SPEEDS

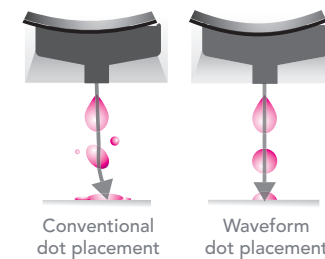
MAPS3 technology reduces the appearance of banding.

MAPS3 (Mimaki Advanced Pass System 3) prints passes in a gradation-like method by dispersing ink drops between passes. This unique imaging technology reduces banding, uneven ink drying and bi-directional stripes.



Superior inkjet technology provides precise, consistent high quality imaging.

Mimaki's Waveform inkjet technology controls the shape of the ink drop to an almost perfect sphere for precise placement. This results in sharper lines, text and image edges.

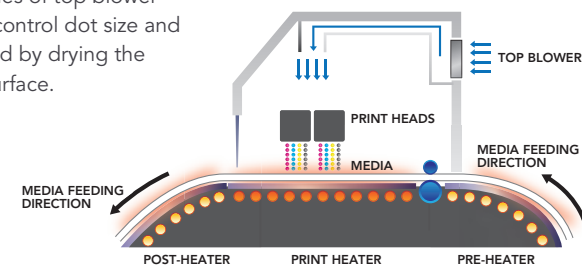


Smooth, high definition color with variable dot printing.

Variable dot printing produces a smoother, more natural gradation without the granular appearance seen in fixed-dot printing.

3-Way Intelligent Heater enhances ink performance.

Three built-in heater areas – pre, print, and post – provide accurate media heating for controlled and consistent ink adhesion and drying. A series of top blower fans control dot size and spread by drying the ink surface.

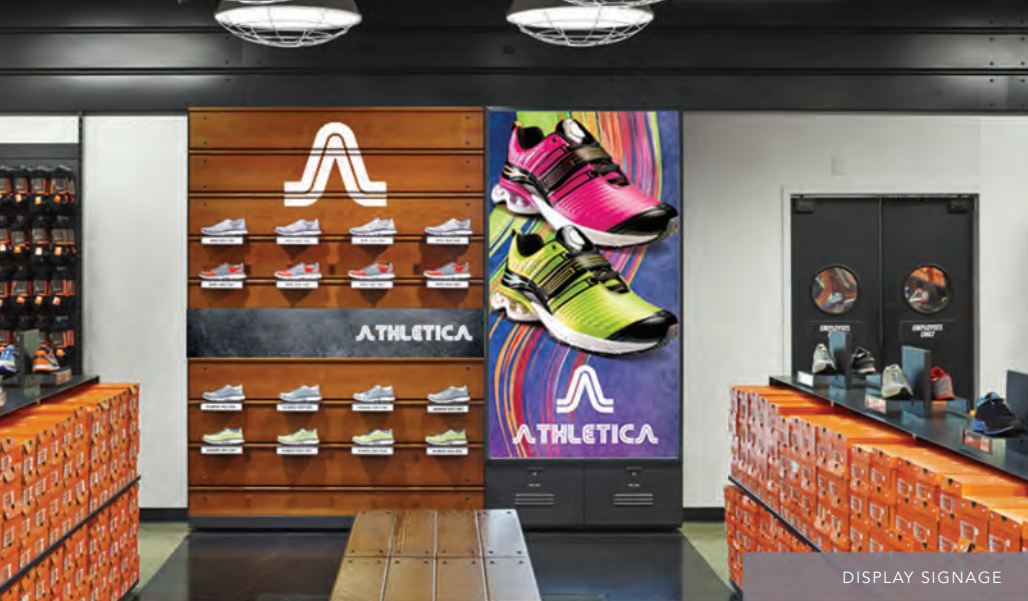


Mimaki | mimakiusa.com

Mimaki USA, Inc. | 150-A Satellite Blvd. Suwanee, GA 30024 | 888-530-4021 | info@mimakiusa.com

© 2014 Mimaki USA, Inc. All rights reserved. Ver. 1.0

Mimaki



DISPLAY SIGNAGE



POP-UP DISPLAYS



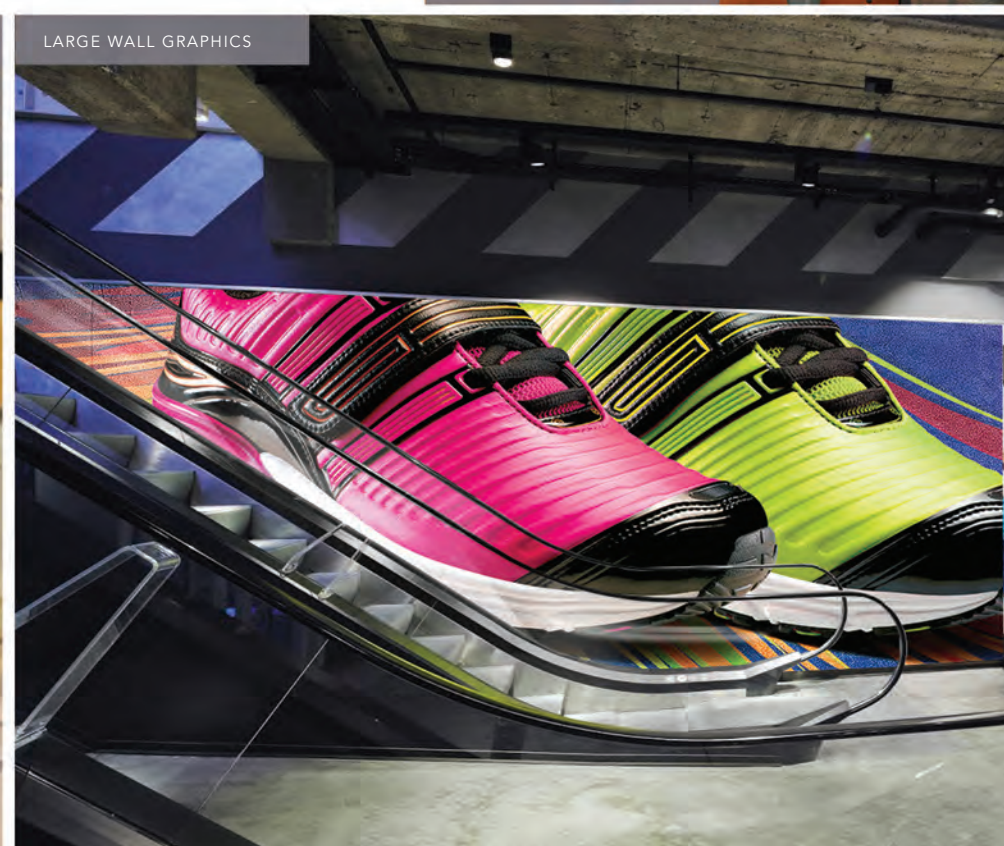
CUSTOM SPORTSWEAR

Go beyond expectations.

Paper, plastics or textiles – whatever the substrate, with the Mimaki JV150 Series printers, your business will thrive. These roll-based models include innovative technologies that deliver exceptional print quality, application versatility and lower operating costs. Meaning, you can add a JV150 to your current line-up as a stand-alone for short-run production or create lucrative custom jobs and produce everything in your current book of business at a higher quality and lower cost per print. And, with eight ink channels, an expanded color pallet, and the ability to print to hundreds of substrates, you gain the application versatility to confidently take on new business.



BACKLIT SIGNAGE



LARGE WALL GRAPHICS

Go beyond conventional.

Mimaki JV150 Series printers go beyond versatility to deliver a remarkable range of applications. Gamut extending ecosolvent inks and variable drop technology enable you to accomplish anything from fine art reproduction to vehicle wraps and more. Or choose dye-sublimation inks to create vibrant textiles and soft signage. Using the Mimaki JV150 Series printer's superb quality, color fidelity and flexibility you'll go beyond the expected to deliver exactly what your customers need.



CONSOLIDATED CONTROLS

JV150 Series printers are equipped with a newly designed, easy to navigate, LED control panel that puts all the printer's main functions and calibrations at your fingertips.



UNINTERRUPTED INK SUPPLY SYSTEM

When printing in CMYK, JV150 Series printers can be configured with two ink cartridges per color. Utilizing the Uninterrupted Ink Supply System (UISS) when one cartridge is emptied the printer automatically switches to the full cartridge to deliver continuous imaging.



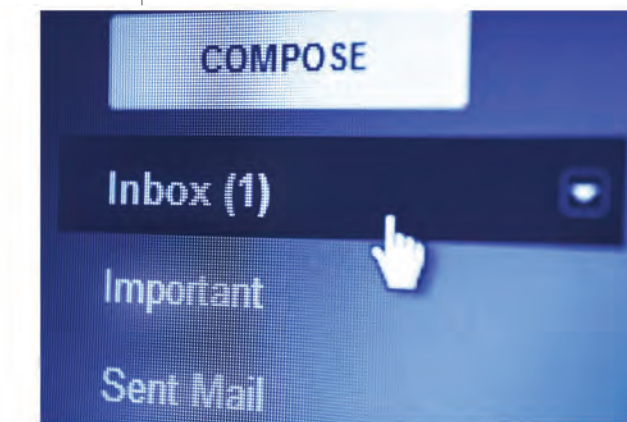
SMOOTH FEEDING PINCH ROLLER SYSTEM

Closely-positioned and independently adjustable pinch rollers ensure smooth, consistent media feeding for accurate imaging at any speed. From heavy canvas to lightweight paper, your media progresses smoothly without cockling or damage.



MAPS3 BRINGS IMAGES TO LIFE

The unique imaging technology of the MAPS3 (Mimaki Advanced Pass System 3) practically eliminates banding at higher speeds by employing a proprietary dot randomized pattern throughout the pass modes.



E-MAIL PRINT STATUS NOTIFICATION

Ensure your designated staff are always in-the-know. For long running print jobs, the JV150 can send status messages such as job start, interruptions and job completion through the e-mail notification system.