

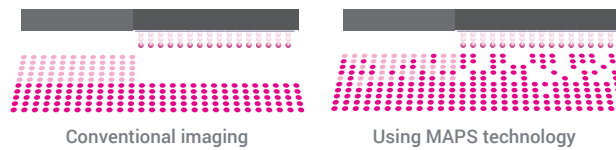
UJF Series features-at-a-glance

- High quality output with variable dot printing
- Low energy UV-LED curing
- Print directly to objects up to 6" deep
- Print onto cylindrical objects with the Kebab optional attachment
- Available in three printer types and media sizes – UJF-3042HG: 14.3"x18.2"; UJF-6042: 24"x16.5"; UJF-7151 plus: 28"x20"

EXCEPTIONAL PRINT QUALITY & PRODUCTION

MAPS technology reduces the appearance of banding.

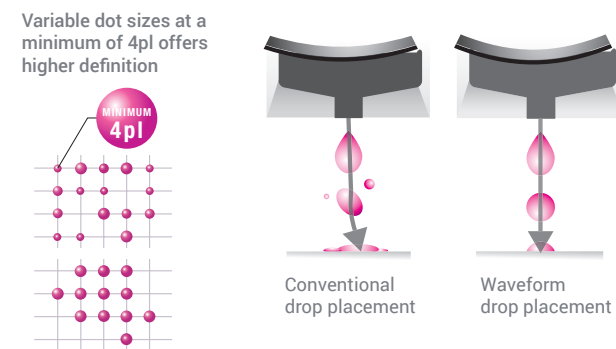
MAPS (Mimaki Advanced Pass System) prints passes in a gradation-like method by dispersing ink drops between passes. This unique imaging technology reduces banding, uneven ink drying and bi-directional stripes.



Variable dot printing produces smoother gradients.

Variable dot printing produces a smoother, more natural gradation without the granular appearance seen in fixed-dot printing.

Waveform control jets each ink droplet at an optimum angle to maintain ink droplet formation and shape.



Ink circulation system for stable, cost-effective printing.

A revolutionary ink circulation system reduces ink settling that can cause clogged nozzles. The result is more stable printing, fewer cleanings and more cost-effective ink utilization. MCT is available for White ink in all models, and for all colors in the UJF-7151 model.

UV-LED TECHNOLOGY

UV-LED uses less energy.

Mimaki's UV-LED system used less energy than other UV types, has a longer life and can print into media that could be damaged by higher-heat systems, so you can print directly onto nearly any substrate including heat-sensitive materials. You can also control the lamp power and curing times for higher quality results.

When using clear ink for a topcoat, the additional control delivers near-flawless glossy results by preventing dust adhesion and air bubble formation.

UV ink versatility.

All UJF Series printers are compatible with LH-100 UV ink, which offers the highest scratch and chemical resistance. LH-100 ink is available in CMYK, white and clear. All UJF Series printers can also use a jettable UV primer for undercoat printing.

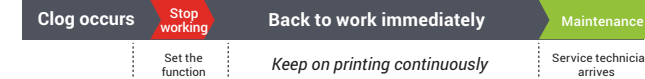
The UJF-3042HG and UJF-6042 are also compatible with LF-140 and LF-200 UV inks for the optimum ink stretchability – up to 200%. These two models also incorporate an automatic primer application function where primer ink is printed simultaneously with CMYK.

AUTOMATED PRINT QUALITY ASSURANCE

Real-time reliability.

UJF Series printers are equipped with Mimaki's Nozzle Recovery System (NRS) that automatically compensates for any nozzle that fails to clear. If for any reason the printer experiences nozzle drop out, rather than stopping, the printing operation can continue by registering with NRS that a particular nozzle has experienced a drop out.

With Nozzle Recovery System



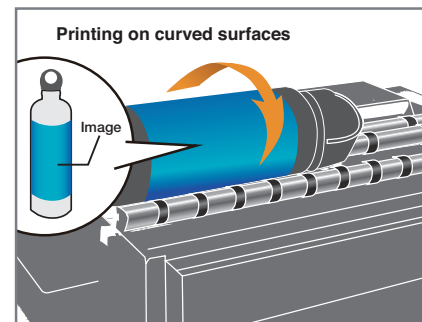
Without Nozzle Recovery System



OPTIONAL KEBAB CYLINDRICAL ATTACHMENT

360-degree direct printing on cylindrical products.

The optional Kebab attachment enables printing directly onto any type of cylindrical item such as bottles, cans, candles and more, up to almost 13 inches long and a maximum diameter of 4.3 inches.



RasterLink6

Intuitive and user-friendly operation



SOPHISTICATED RIP SOFTWARE MAXIMIZES PERFORMANCE

Simultaneous layer printing.

RasterLink6 software enables simultaneous layer printing for laying down of a flood or spot primer layer while printing color.

Jig and template function.

Template registration is achieved through the "Jig Layout Function" which allows the designed image to be placed inside the template layout and accurately positioned for print setup.

Web software update function.

Program updates and profiles can be downloaded via the Mimaki website.

UJF SERIES SPECIFICATIONS | INKS

Item	Specifications		
	UJF-7151 plus	UJF-6042	UJF-3042
Print Head	On-demand piezo/6 heads	On-demand piezo	On-demand piezo
Print Resolution	1200 dpi	720, 1440 & 1800 dpi	720x600 dpi, 1440 x 1200 dpi
Max. Print Area/Media Size	28"W x 20"L (710 x 510 mm)	24"W x 16.5"L (610 x 420 mm)	14.3"W x 18.2"L (364 x 463 mm)
Max. Media Thickness	6" (153 mm)	5.9" (150 mm)	5.9" (150 mm)
Max. Media Weight	22 lbs. (10 kg)	15.4 lbs. (7 kg)	11 lbs. (5 kg)
UV Ink Type	LH-100 UV: C, M, Y, K, W, Cl PR-200 UV Primer LUS-120: C, M, Y, K, W, Cl*	LH-100 UV: C, M, Y, K, W, Cl LF-140 UV: C, M, Y, K, W, Lc, Lm LF-200 UV: C, M, Y, K, W PR-100 UV Primer	LH-100 UV: C, M, Y, K, W, Cl LF-140 UV: C, M, Y, K, W, Lc, Lm LF-200 UV: C, M, Y, K, W PR-100 UV Primer
Ink Supply System	1 L bottle	220 ml cartridge 600 ml ink pack	220 ml cartridge 600 ml ink pack
Interface	Ethernet 1000BASE-T /USB 2.0	USB 2.0	USB 2.0
Operational Environment	Temp: 59 - 86°F (15 - 30°C) 35-65% RH (non-condensing)	Temp: 59 - 86°F (15 - 30°C) 35-65% RH (non-condensing)	Temp: 59 - 86°F (15 - 30°C) 35-65% RH (non-condensing)
Input Power Supply	AC100V-240V, AC200-240V	AC100V-240V, 50/60 Hz	AC100V-240V, 50/60 Hz
Dimensions (W x D x H)	86.5" x 61.9" x 50.1" (2197 x 1572 x 1273 mm)	59.4" x 38" x 37.8" (1510 x 966 x 960 mm)	47.2" x 38.1" x 30.3" (1200 x 970 x 770 mm)
Weight	600 lbs. (317 kg)	331 lbs. (150 kg)	287 lbs. (130 kg)
Kebab Option Compatible	Yes	Yes	Yes

Item	Color	220 ml Cartridge	600 ml Ink Pack	1 L Bottle
LH-100 UV Ink	Cyan	SPC-0659C	SPC-0597C	LH100-C-BA
	Magenta	SPC-0659M	SPC-0597M	LH100-M-BA
	Yellow	SPC-0659Y	SPC-0597Y	LH100-Y-BA
	Black	SPC-0659K	SPC-0597K	LH100-K-BA
	White	SPC-0659W	SPC-0597W	LH100-W-BA
	Clear	SPC-0659CL	SPC-0597CL	LH100-CL-BA
PR-100 UV Primer		SPC-0731	SPC-0732	—
PR-200 UV Primer		—	—	PR200-Z-BA
LF-140 UV Ink	Cyan	SPC-0727C	SPC-0728C	—
	Magenta	SPC-0727M	SPC-0728M	—
	Yellow	SPC-0727Y	SPC-0728Y	—
	Black	SPC-0727K	SPC-0728K	—
	Light Cyan	SPC-0727LC	SPC-0728LC	—
	Light Magenta	SPC-0727LM	SPC-0728LM	—
	White	SPC-0727W	SPC-0728W	—
LF-200 UV Ink	Cyan	SPC-0660C	SPC-0591C	—
	Magenta	SPC-0660M	SPC-0591M	—
	Yellow	SPC-0660Y	SPC-0591Y	—
	Black	SPC-0660K	SPC-0591K	—
	White	SPC-0660W	SPC-0591W	—



Some of the samples in this brochure are artificial renderings. Specifications, design and dimensions stated may be subject to change without notice (for technical improvements, etc.).

The corporate names and merchandise names written in this brochure are the trademarks or registered trademarks of their respective companies.

Inkjet printers print using extremely fine dots, so colors may vary slightly after replacement of the printing heads. Also note that if using multiple printer units, colors could vary slightly from one unit to another due to slight individual differences.



Mimaki UJF Series UV-LED Flatbed Printers

Multi-purpose, high performance, small profile UV-LED flatbed printers for custom on-demand printing.



mimakiusa.com

Mimaki USA, Inc. | 150-A Satellite Blvd. Suwanee, GA 30024 | 888-530-4021 | info@mimakiusa.com

© 2016 Mimaki USA, Inc. All rights reserved. Ver. 1.1



UJF Series



CELLPHONE CASES



CYLINDRICAL CONTAINERS

Multipurpose creativity.

UJF Series printers can open the door to the lucrative world of custom decoration. With one of these models, you can augment your current digital print business by offering specialty items, novelties, awards and custom pieces. Easily and quickly produce smartphone covers, awards, personalized writing instruments, water bottles, wedding specialties and more. These smaller-footprint models fit easily in a shop or office, and can also produce wayfinding and safety signs, customized binder covers, or personalized identification cards. They are ideal for screen or pad printers that want to add one-off or custom digital print services. Whatever the purpose, a Mimaki UJF Series printer can get the job done.



SPECIALTY PACKAGING



WAYFINDING SIGNAGE



PERSONALIZED ITEMS



AWARDS & TROPHIES



NOVELTY ITEMS

MEDIA SIZE VERSATILITY

The UJF Series models are available in three versatile sizes for every type of application and print shop needs.



UJF-3042HG | 14.3" x 18.2" max. media area



UJF-6042 | 24" x 16.5" max. media area

More. Delivered.

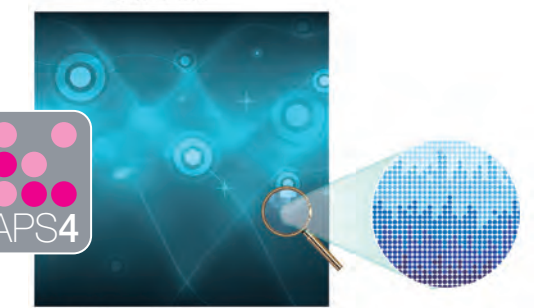
The Mimaki UJF-7151 plus UV-LED printer is the next generation model in the world's best selling UJF Series line. Its design and technologies enable sign, specialty graphics, and award and personalization companies to realize the benefits of digital printing with higher margins and lower production costs, without compromising quality. The UJF-7151 printer is a multipurpose model that can print on a variety of substrates including plastics, metal, wood, leather and glass onto materials up to 28" wide x 20" long and 6" deep.



UJF-7151 plus | 28" x 20" max. media area



MAPS OFF



MAPS4

MAPS ON

MAPS4 IMPROVES IMAGE SMOOTHNESS

The unique imaging technology of the MAPS4 (Mimaki Advanced Pass System 4) practically eliminates banding at higher speeds by employing a proprietary dot randomized pattern throughout the pass modes.



CYLINDRICAL KEBAB PRINT ATTACHMENT

The optional Kebab print bed attachment accommodates 360° custom printing on cylindrical items such as bottles and cans up to 13" in length.



ENERGY SAVING UV-LED TECHNOLOGY

UV-LED offers reduced energy consumption, longer lifetime and almost no VOC emissions during printing.



EXTRA LARGE FLATBED PRINTING AREA

Print bed area accommodates a maximum media size of 28" wide x 20" long x 6" deep for larger substrates and more pieces per single print pass.



STABLE AND PRECISE IMAGING MECHANISM

Unlike conventional models, the print table moves the substrate under the staggered print heads, using Mimaki's exclusive ball screw technology to reduce vibration and increasing ink drop accuracy.