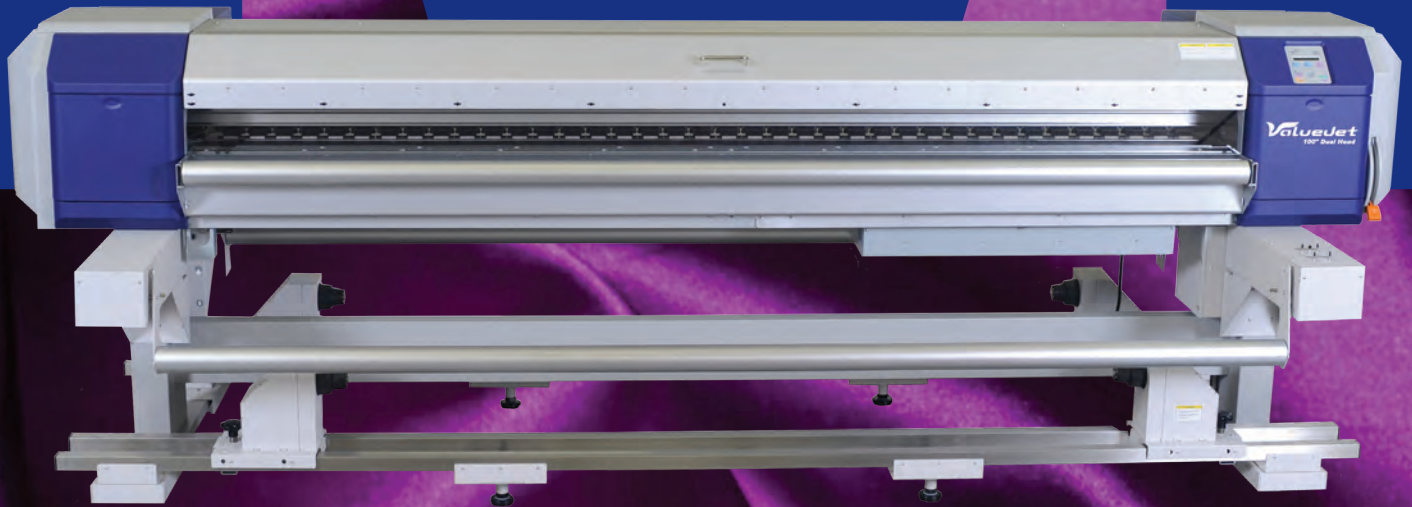


*ValueJet*



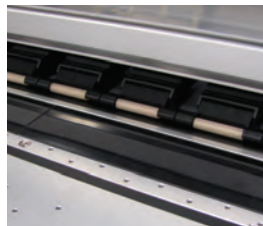
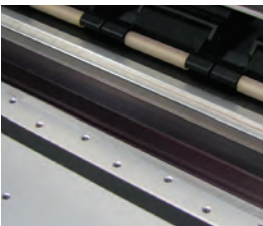
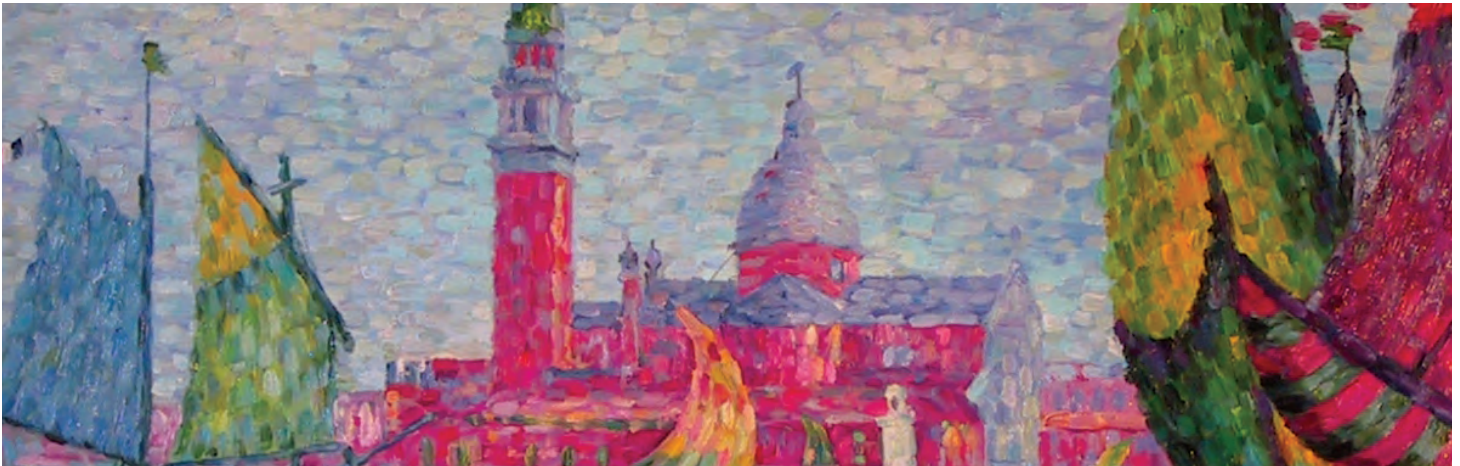
1628TD-64" / 2628TD-100"

- Designed to print Soft Signage
- Run two types of ink simultaneously
- Up to 447sq/ft/hr with the new Dual Head Design

**MUTOH**

# The Best in Soft Signage Printing

The Mutoh ValueJet 1628TD/2628TD, is designed for soft signage applications for both polyester fabrics and dye-sublimation paper, such as POP-displays, tradeshow graphics, museum fine art and wall murals. Incorporating a new 8-channel print head technology, using On Demand Piezo Driving Method and encompassing Mutoh's patented Intelligent Interweaving "wave" Print Technique that virtually eliminates banding. The ValueJet 1628TD/2628TD delivers superior line sharpness and photo quality with continuous tones, smooth transitions and a wide color gamut. The ValueJet TD can be used with dye transfer sublimation ink (for sublimation heat transfers on polyester fabrics and polyester-coated hard surfaces), direct print sublimation Ink (for polyester fabrics) and water-based modified pigment inks (for coated textile: cotton sateen, cotton sailcloth, polyester banner and nylon flag).



Model Name	ValueJet 1628TD-64"	ValueJet 2628TD -100"
Printer Part #	19500-0001	19501-0001
Print Method	Drop-On-Demand Piezo Drive Method	Drop-On-Demand Piezo Drive Method
# of Nozzles	(180 nozzles x 8 lines) x 2 heads	(180 nozzles x 8 lines) x 2 heads
Available Ink Options	Aqueous Ink(standard) KCMY x 8, 6, 4 x 2, 4(2 Ink Types) 220/440ml cartridges	
Print Mode	720/540/360 dpi, 14 Modes (resolutions & passes)	
Head Height	3 Steps: Low: 1.5mm / middle: 2.5mm / high: 4.0mm	
Maximum Media Width	64 inches	104 Inches
Maximum Print Width	63.2 inches	103.2 inches
Max Media Roll Weight	66 lbs (176 w/ optional HD take up)	Standard 220lbs
Media Roll Diameter	7.8" Diameter (12.6*** w/ HD)	12.6*** Diameter
Core	2" or 3" Core	
Weight (Printer/stands)	368 lbs/75lbs	474lbs/90lbs
Dimensions (Printer)	106" x 37" x 50"	146" x 37" x 50"
Print Speed	Up to 154 sq/ft/hr in production mode/Draft quality speed up to 447 sf/hr	
Operating Temperature	68° F - 89.6° F	
Operating Humidity Range	40%-60%	
Power Requirements	AC 100 - 200V	
Warranty	1 Year on-site warranty	

The above spec information is tentative and subject to change. \*Print Speeds are estimated figures and subject to change. \*\* Max media diameter unless max media weight is reached first.



**1-800-242-8069 • info@valuerite.com**  
**905-477-4668 • Fax: 905-477-5131 www.valuerite.com**  
**7280 Victoria Park Avenue Unit E**  
**Markham, Ontario L3R 2M5**