

Stretches beautifully up to

MAX 350%



Stretchable UV-curable ink that expands your possibilities

LUS-350

Moldable clear ink is also included in the lineup



In addition to color inks (Cyan, Magenta, Yellow, Black and White), Mimaki offers a clear ink*1 as part of the LUS-350 lineup that's unlike anything else in the market. This clear ink can add unique textures or a glossy finish that can't be obtained by printing with color ink alone.

Color	Item No.	Package
Black	I-LUS35-K-BA-1-KW	1 L Ink Bottle
Magenta	I-LUS35-M-BA-1-KW	
Yellow	I-LUS35-Y-BA-1-KW	
Cyan	I-LUS35-C-BA-1-KW	
White	I-LUS35-W-BA-1-KW	
Clear*1	I-LUS35-CL-BA-1-KW	

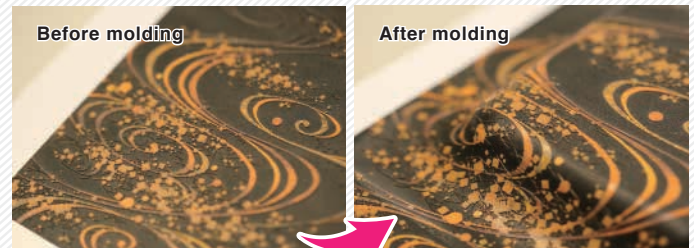
*1: As of April 2016, the clear ink can be loaded into the UJF-7151 plus.

Extreme stretchability—up to 350%

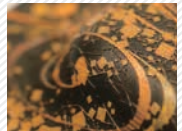
After printing, LUS-350 ink can stretch up to 350% when heated to between 120 and 200°C. The ink restores its rigidity after cooling down to room temperature, while maintaining the molded shape and its durability. Seemingly contradictory characteristics, rigidity and stretchability, are combined in one no-compromise ink for producing finished prints that are both beautiful and durable.

Beautiful print results are retained even after molding

Previously, molded products were decorated after molding by screen printing or other methods. The LUS-350 ink doesn't crack after molding and thereby enables printing on the substrate before molding processes, including vacuum, TOM or other molding techniques. Ideal applications include automotive components, molded signs, mockups and more.

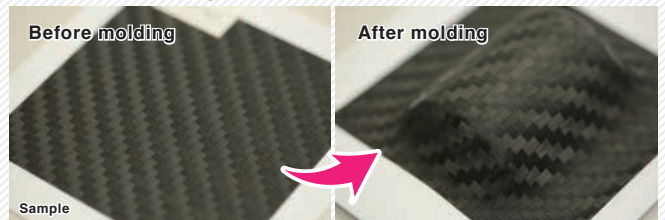


Intricate textures of decorative fine prints are retained even after molding. Furthermore, raised areas of thickly applied ink and double/triple layer printing also stay intact without cracking.

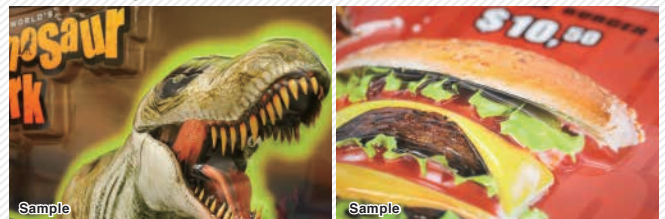


LUS-350 ink can be used for a variety of applications

Automotive component



Molded sign



Compatible Mimaki printer models



UJF-7151 plus



JFX200-2513

●Some of the samples in this catalogue are artificial renderings. ●Specifications, design and dimensions stated in this catalogue may be subject to change without notice (for technical improvements, etc). ●The corporate names and merchandise names written on this catalogue are the trademark or registered trademark of the respective corporations. ●Inkjet printers print using extremely fine dots, so colors may vary slightly after replacement of the printing heads. Also note that if using multiple printer units, colors could vary slightly from one unit to other unit due to slight individual differences.

Mimaki Global Network

MIMAKI USA, INC.
 MIMAKI BRASIL COMERCIO E IMPORTACAO LTDA
 MIMAKI INDIA PRIVATE LIMITED
 MIMAKI ENGINEERING (TAIWAN) CO.,LTD.

Europe MIMAKI EUROPE B.V.
 Indonesia PT. MIMAKI INDONESIA
 Australia MIMAKI AUSTRALIA PTY. LTD.
 China SHANGHAI MIMAKI TRADING CO.,LTD.